

## WATCH THE WAKE

### What is a Wake?

A Wake is the disturbed body of water around and behind a boat as it makes its way through the water. A boat's wake can damage other boats, docks and shorelines. It can also be a risk for swimmers, divers and people on small boats that might capsize. Wakes hitting the river shorelines can cause severe erosion and cause banks to collapse. **Check behind you to understand the impact of your wake and reduce your speed to minimize your impact.**



### No-Wake Zone

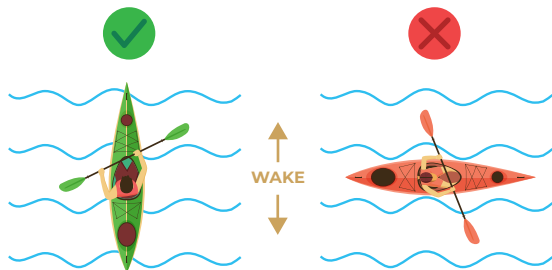
The boat launch area and 30 metres on either side, is considered a no wake zone. Be aware of your boats no-wake speed.

### How-To Prepare for a Wake

When operating a smaller boat such as a canoe, kayak or a paddle board always be aware of boaters around you and the wakes they create. **A wake can capsize your boat if you are not prepared.**

· To get prepared it is best to position yourself perpendicular to the wave so that your boat can slice through the wake.

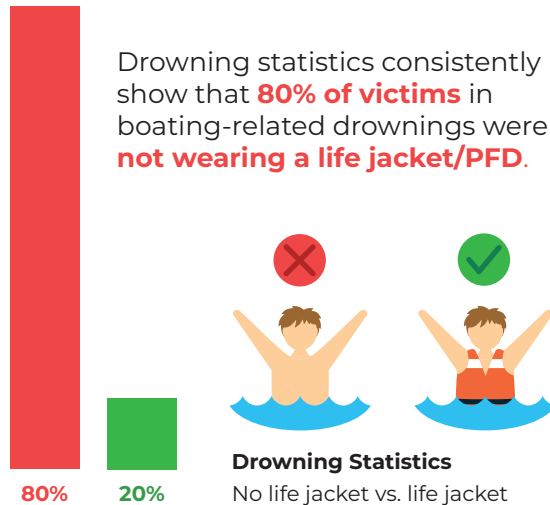
· If you are positioned parallel to the wake, it is more likely to rock you and possibly capsize your boat.



## LIFE JACKETS SAVE LIVES



Wearing a life jacket or PFD is the most effective way to reduce boating-related drownings in Canada.



# BOAT SAFETY

## AT CHIEFSWOOD PARK



Proud department of



**Be respectful.  
Be courteous.  
Be safe.**

**ZERO TOLERANCE  
FOR ALCOHOL AND DRUG USE**

**PLEASE USE AT YOUR OWN RISK.**

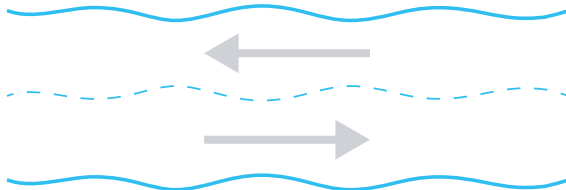
## SAFETY ON THE WATER

Chiefswood Park has a wide variety of recreational visitors that include **small boats** such as paddle boards, kayaks and canoes; **large boats** such as speed boats and pontoon boats; **personal watercrafts (PWC)** such as Jet Skis; and individual swimmers. We also have neighbours across the river that utilize the waters for swimming and other small boat activities. It is important to be aware of all boats to ensure the safety of everyone in the water around you.

## KNOW THE RULES

**From canoes to speedboats, know the “Rules of the Road” and boat by them!**

Just like the road, driving on the right side is considered safe and acceptable when boating.



- Speed limit is **10km** within 30 metres of shoreline
- Only persons 16 years of age or older may operate a personal watercraft (PWC) without supervision.
- Travel 30 metres from the dock to deeper water before accelerating to a higher speed.
- **Never Cruise with Booze** - Impaired driving, whether on land or water, is punishable under the Criminal Code of Canada. First offences can result in:
  - Fines
  - Prohibition from operating a boat or motor vehicle
  - Seizure of the boat for a period of time
  - Possible prison terms

## RECREATIONAL TOWING



Recreational towing consists of activities like tubing, water skiing, parasailing and knee boarding. Here are the rules to remember when towing someone with your boat.

- You **MUST** have a spotter on the towing boat with you who can keep watch on each person you are towing to notify you of any dangers.
- There must be an empty seat on your boat for each person you are towing in case they need to come on board.
- Chiefswood Park encourages everyone to wear a life jacket. Be considerate of your wake and its impacts for other boats and swimmers in the water. Don't tow near canoes, kayaks, sailboats or paddle boards. They may cross your riders' path and your wake can capsize them.

## PERSONAL WATERCRAFT (PWC)



PWCs are designed for joyriding, so go out and have fun but **BE CAREFUL!** When operating a PWC be sure to stay alert and be aware of your **WAKE**. At high speeds, it is hard to see swimmers and other PWCs in time to avoid them.

## WATCH THE WEATHER

Chiefswood Park's Grand River is susceptible to an undertow. An undertow is a current of water below the surface that is moving in a different direction from any surface current. This undertow is increased when winds reach speeds of over 30 km/h. Undertows can be dangerous for swimmers, divers and small boats such as canoes, kayaks or paddle boards. Watch the weather to be sure the undertow is manageable as Chiefswood Park will cancel rentals if winds reach to 30 km/h.



## COMMON BOATING OFFENCES AND THEIR FINES:

- Operating a boat underage - **\$250**
- Fail to have Proof of Competency on board - **\$250**
- Operating a boat in a careless manner - **\$350**
- Operating a boat in an unsafe manner - **\$500**
- You don't have an approved Life jacket or PFD for each person on board - **\$200 \*per person**
- You don't have a spotter to watch a person being towed - **\$250**
- You don't have an extra seat for a person being towed - **\$250 \*per person**

Some offences result in fines for both the operator AND the person who allowed the boat to be operated. Meaning that if you lend someone your boat, and they are convicted of a boating-related offence, you can be charged too.

